



**OPPOSITE:** "Standard vanities give such a boxed-in look," interior designer Perry Walter says. Instead, he designed this painted white maple vanity, topped by quartz-surfacing, to increase the open floor space in the small bath. **LEFT:** Polished-chrome single-handle faucets and large vessel sinks provide the modern lines that define this bathroom.



**Room size** 100 sq ft  
**Budget** \$12,095  
**Why we love it**  
 A band of mosaic glass tile adds a fun splash of color.

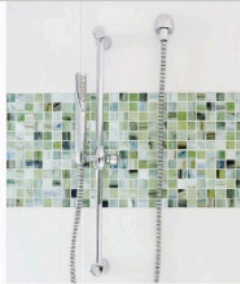
# expansive equation

Sparkling mosaic glass tiles plus a cool white setting equal spacious, master bathroom bliss.

WRITER AND FIELD EDITOR LISA MOWRY • PHOTOGRAPHER ANTHONY-MASTERTSON



## modern color splash:



That was the directive Atlanta homeowners Ken Mims and Mark Edge gave interior designer Perry Walter. "The challenge was to make this small bathroom appear larger and more open," says Walter, who did that in several ways, including eliminating the bathtub in the new floor plan.

Another space-stretcher for the master bath was the double vanity. Walter designed a custom vanity to accomplish two goals: make the room appear larger by maximizing open space on the floor, and create storage for the homeowners. The vessel sinks play into a motif of rectangles, reinforcing the contemporary design.

The mainly white color palette also visually expands the space. Walter chose white for the walls, mirrors, vanity, and shower wall tiles. He warmed it up with light tan floor tiles and white quartz-surfacing countertop. A band of glass mosaic accent tiles became the focal point. "We came up with a mosaic design element that would give just the right pops of color," Walter says.

The designer also boosted the storage. Two floating shelves above the toilet hold towels and other bathroom items, and a large niche for shower products was incorporated into the band of mosaic tile.

Both homeowners are physicians who appreciate neat and orderly living. Add in the designer's aesthetics, and the end result fulfills the doctors' orders. "This master bath retreat combines it all—soothing colors, functional design, and efficient space planning," Walter says.

RESOURCES BEGIN ON PAGE 106.

**LEFT:** A walk-in shower with two showerheads, a built-in seat, and a niche create the ultimate shower experience. **ABOVE:** The handheld chrome fixture is one of two showerheads in the large-scale shower. **OPPOSITE:** Open shelves in the toilet alcove add a decorative storage element.

## budget

### Cabinetry

Hardware	90
Vanity	2,200

### Plumbing

Faucets	274
Shower fixtures	211
Sinks	450
Toilet	248

### Surfaces

Floor and shower floor tile	1,808
Glass mosaic tile	1,242
Shower door	1,850
Shower wall tile	1,437
Vanity countertop	1,200

### Miscellaneous

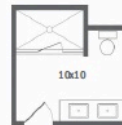
Mirrors	670
Stools	190
Shelves	225

**Total** **\$12,095**

*Costs do not include labor unless noted.*



Check out [BHG.com/SmallBaths](http://BHG.com/SmallBaths) to see more before and after small bath makeovers.



Removing the tub made room for a spacious 6-foot-long shower. The new vanity includes customized storage to maximize the small bathroom.

### Top- vs. Undermount Sinks

Whether a bathroom sink should sit on top of the countertop (known as top-mount or vessel sinks) or be built in below the counter depends on aesthetic and practical preferences. Interior designer Perry Walter of Walter Studio shares his thoughts.

**TOP-MOUNT SINKS** add a distinct design feature to a room, Walter says, particularly if the goal is a modern look. He prefers larger top-mount sinks for utilitarian rooms, such as a master bath. Smaller vessel sinks work best in powder rooms. Also consider the faucet height, angle and flow of the water, and how it sits over the drain. "Make sure your faucet complements the sink and bowl depth," Walter says.

**UNDERMOUNT SINKS** are a good choice for families with children, who might find it harder to reach a vessel sink. Traditional undermount sinks are also easier to clean around and, depending on the style, allow more space for the faucet and countertop.